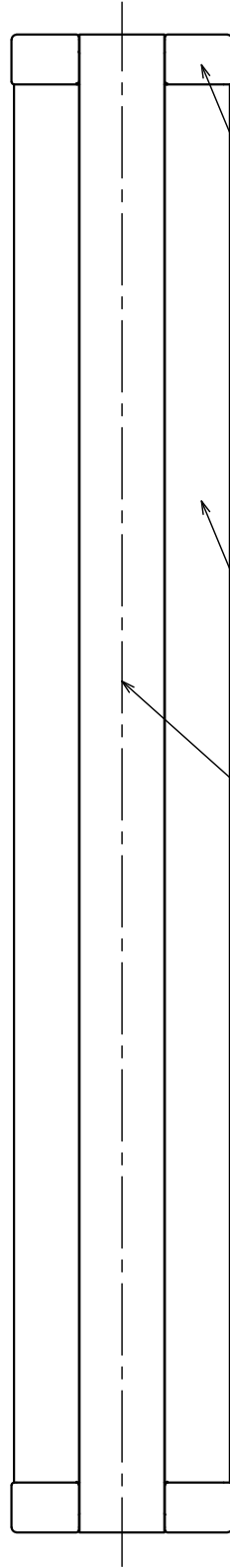
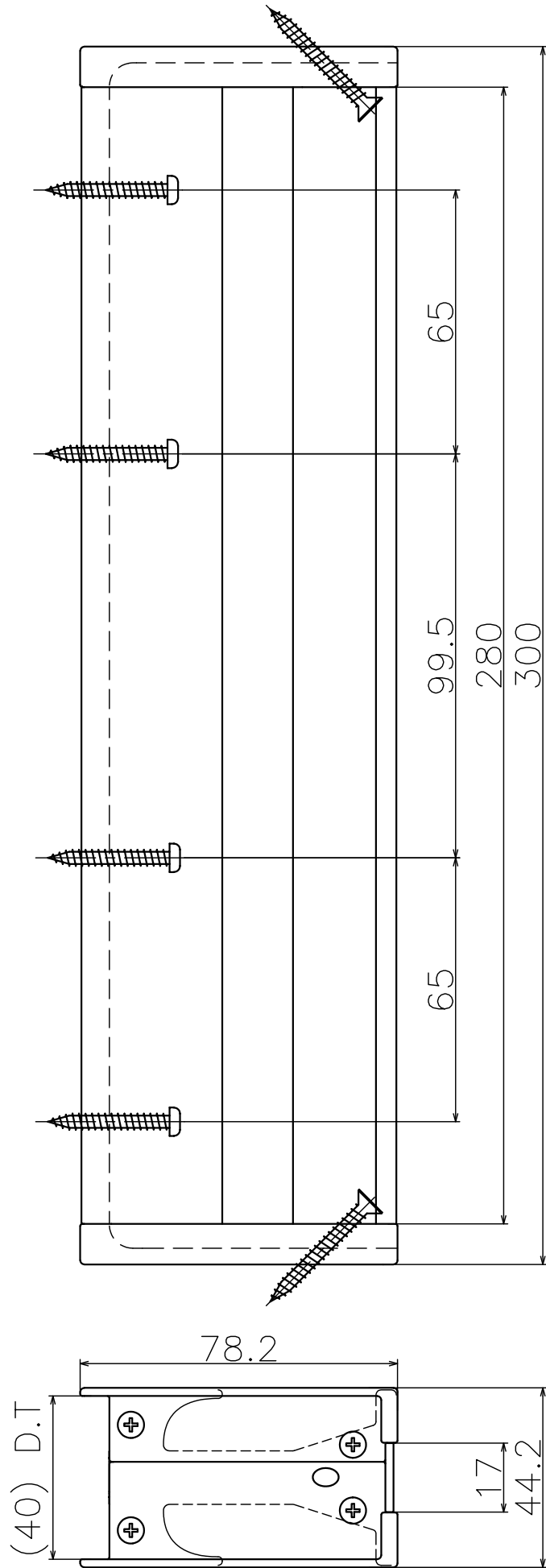


2021-02-19 11:54:15 PA-69-300_drawing

A3

作成【Jaemel】




Material: Zinc Die Casting
Finish: Various Plating

Material: Aluminium
Finish: Various Anodization

Material: ABS

PA-69-XX-300

| Finish: Cap | Finish: Body | Code |
|---------------------|----------------------|----------------|
| Satin Nickel | Satin Color Hairline | PA-69-ZN-300 |
| Pearl Black | Blasted Black | PA-69-KGQ-300 |
| Dark Umber | Dark Umber | PA-69-4Q4Q-300 |
| Shot Champagne Gold | Shot Champagne Gold | PA-69-LQLQ-300 |

| Product name | | Name | | | Code | |
|----------------------------|--|---|-----|-----|--------|-----|
| 掘込引手 PA-69 L300 | | — | | | 表参照 | |
| Recessed Handle PA-69 L300 | | — | | | Ver01 | |
| KAWAJUN 河渚株式会社 | |  | Dim | Geo | S= 1:1 | 外形図 |
| | | | | | | |